

SECOND INSTALLATION

October 28, 2006 – January 7, 2007

Barbara Natoli Witt

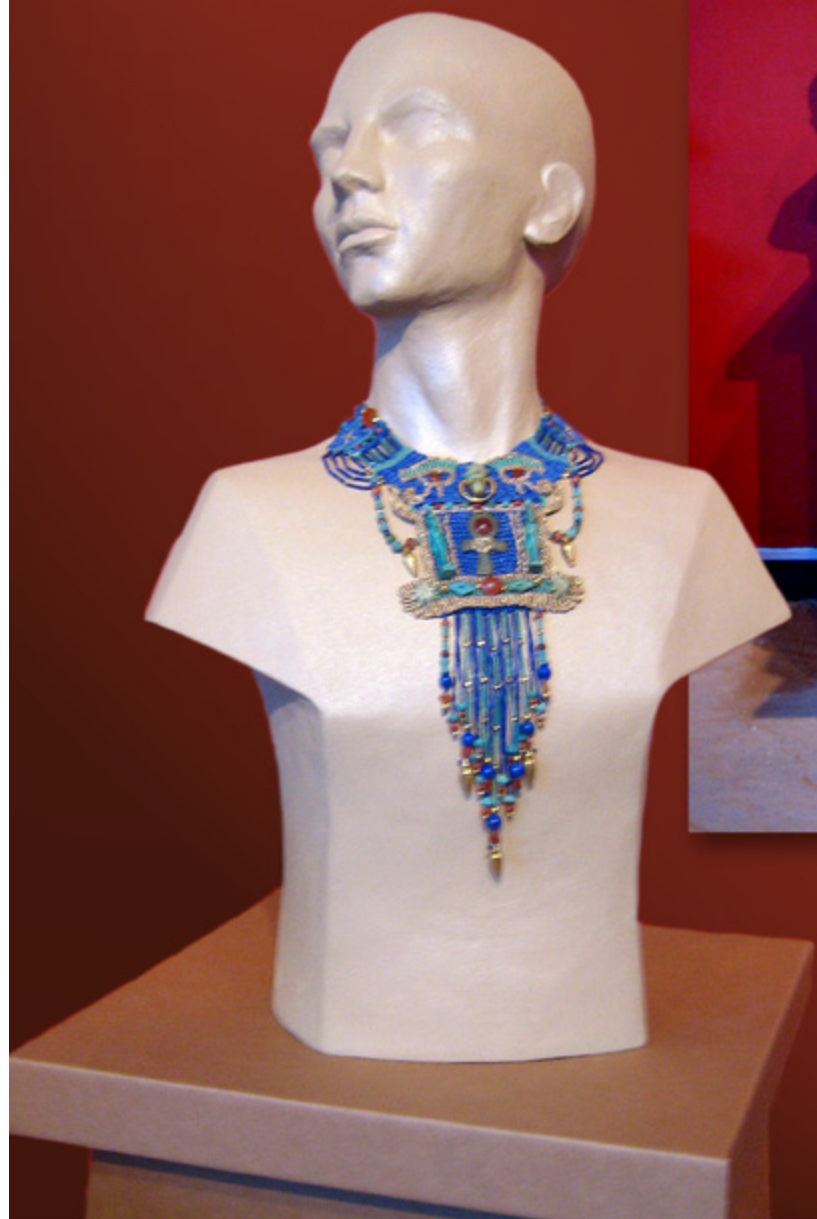
Personal Vision

secca
southeastern center for contemporary art

WINSTON-SALEM, NORTH CAROLINA



*Know first who you are, then deck yourself out accordingly.
Epictetus Discourses, 3.1*





Barbara Natoli Witt Personal Vision

Since early times humans have been interested in adornment of their bodies. The archeological world abounds with artifacts that demonstrate this. Bits and pieces of jewelry from former epochs are widely available and generally end up in collections to be viewed and admired, never being worn. Strangely these objects lose the idea that brought them to life, which was to be used as embellishment of the human form.

On first encounter with Barbara Witt's work she astonishes the viewer with scale and complexity. Using rare and precious objects as the focus of the piece Witt pulls one into her world. Ancient gold coins, Pre-Columbian talismans, Renaissance curiosities - who could resist a closer view of such rarities usually only seen in a case? A dazzling array of exotic beads in materials such as gold, pearls, emeralds, ivory, coral and glass surround these central objects. Witt's artistry is not simply in the materials she so deftly uses but in the way she literally ties the pieces together. Using macramé techniques to engineer the necklaces she creates intricate structures that secure and support the components. This is the point at which we see Barbara Witt's vision develop. She makes a connection with each of the elements used. The pieces are built up in layers of intricately knotted forms all echoing and supporting the central theme. Leaves, figures, and undulating waves are some of the motifs that intertwine to create a bas-relief sculpture. Universal symbols and cultural icons are worked in tapestry techniques to incorporate pictorial ideas that enhance the overall feeling of the piece.

A deep understanding of history is evident in the way the artist is able to convey the essence of the culture in which the object was created. The artist's work is not simply about historical reference but also speaks of mystery and sensuality and delight. These large collars and bib style necklaces immediately announce themselves and demand to be looked at and explored. They are a spectacle of color and movement that draws the viewer closer to reveal their stories. The stories of goddesses and myths, beauty and power, magic and nature. These are the stories Witt is interested in sharing with her audience and the driving force behind her work. ❀



